

**LEGEND**

**OUTDOOR AMENITIES**

1. Featured seating
2. Multipurpose lawn
3. Kids Activity Room\*
4. Jogging track
5. Swimming pool
6. Kids pool
7. Pool side deck area
8. Basketball court
9. Kids cave zone

**INDOOR AMENITIES**

10. Gymnasium
11. Cafe\*
12. Spa\*
13. Dining Room\*
14. Banquet hall
15. A.V. room
16. Fitness zone
17. Library
18. Music hall
19. Kids play zone
20. Creche\*
21. Kids A.V. Room



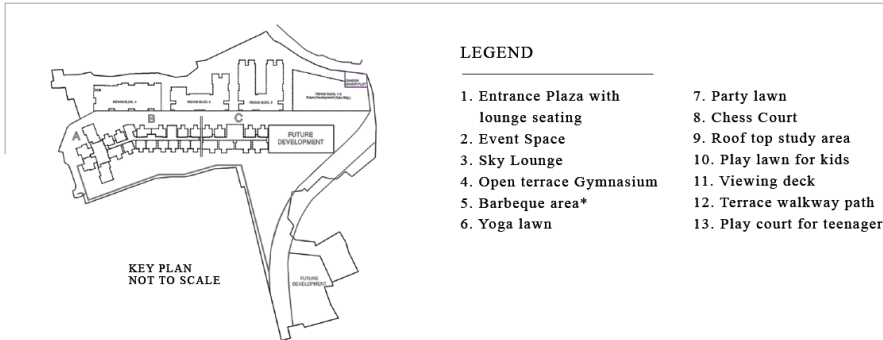
**E - DECK LEVEL PLAN**

Information, Images, Furniture, Visuals and Aesthetics shown herein are only Architect's Impression and does not form part of the final offer. The areas and dimensions shown herein are subject to a tolerance variation of +/- 3%. Promoter reserves its right to upgrade, modify, relocate, enhance, make changes, delete or alter the common amenities and/or any other features or as may be required as per approvals and permissions granted by the concerned authorities from time to time. The Promoter reserves the right to relocate the reservations elsewhere within the layout. The Agreement for Sale executed between the Promoter and the Allottee would be binding and final. Joint development with Reddy Builders and Developers ('Oregon Hills LLP' is a partner in Reddy Builders and Developers)

MahaRERA Registration No: P51800006729 Available on: <https://maharera.mahaonline.gov.in>



PLAN NOT TO SCALE



**LEGEND**

- |                                       |                              |
|---------------------------------------|------------------------------|
| 1. Entrance Plaza with lounge seating | 7. Party lawn                |
| 2. Event Space                        | 8. Chess Court               |
| 3. Sky Lounge                         | 9. Roof top study area       |
| 4. Open terrace Gymnasium             | 10. Play lawn for kids       |
| 5. Barbeque area*                     | 11. Viewing deck             |
| 6. Yoga lawn                          | 12. Terrace walkway path     |
|                                       | 13. Play court for teenagers |



**TERRACE LANDSCAPE PLAN**

Information, Images, Furniture, Visuals and Aesthetics shown herein are only Architect's Impression and does not form part of the final offer. The areas and dimensions shown herein are subject to a tolerance variation of +/- 3%. Promoter reserves its right to upgrade, modify, relocate, enhance, make changes, delete or alter the common amenities and/or any other features or as may be required as per approvals and permissions granted by the concerned authorities from time to time. The Promoter reserves the right to relocate the reservations elsewhere within the layout. The Agreement for Sale executed between the Promoter and the Allottee would be binding and final. Joint development with Reddy Builders and Developers (Oregon Hills LLP is a partner in Reddy Builders and Developers)

MahaRERA Registration No: P51800006729 Available on: <https://maharegistry.gov.in>



PLAN NOT TO SCALE

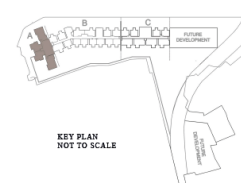
## WING A



## TYPICAL FLOOR PLAN

Information, Images, Furniture, Visuals and Aesthetics shown herein are only Architect's Impression and does not form part of the final offer. The areas and dimensions shown herein are subject to a tolerance variation of +/- 3%. Promoter reserves its right to upgrade, modify, relocate, enhance, make changes, delete or alter the common amenities and/or any other features or as may be required as per approvals and permissions granted by the concerned authorities from time to time. The Promoter reserves the right to relocate the reservations elsewhere within the layout. The Agreement for Sale executed between the Promoter and the Allottee would be binding and final. Joint development with Reddy Builders and Developers ("Oregon Hills LLP" is a partner in Reddy Builders and Developers)

MahaRERA Registration No: P51800006729 Available on: <https://maharera.mahaonline.gov.in>



KEY PLAN  
NOT TO SCALE



PLAN NOT TO SCALE

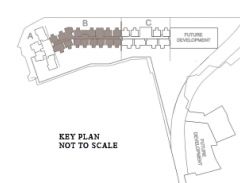
## WING B



## TYPICAL FLOOR PLAN

Information, Images, Furniture, Visuals and Aesthetics shown herein are only Architect's Impression and does not form part of the final offer. The areas and dimensions shown herein are subject to a tolerance variation of +/- 3%. Promoter reserves its right to upgrade, modify, relocate, enhance, make changes, delete or alter the common amenities and/or any other features or as may be required as per approvals and permissions granted by the concerned authorities from time to time. The Promoter reserves the right to relocate the reservations elsewhere within the layout. The Agreement for Sale executed between the Promoter and the Allottee would be binding and final. Joint development with Reddy Builders and Developers ("Oregon Hills LLP" is a partner in Reddy Builders and Developers)

MahaRERA Registration No: P5180006729 Available on: <https://maharera.mahaonline.gov.in>



KEY PLAN  
NOT TO SCALE



PLAN NOT TO SCALE



**WING C**



**TYPICAL FLOOR PLAN**

Information, Images, Furniture, Visuals and Aesthetics shown herein are only Architect's Impression and does not form part of the final offer. The areas and dimensions shown herein are subject to a tolerance variation of +/- 3%. Promoter reserves its right to upgrade, modify, relocate, enhance, make changes, delete or alter the common amenities and/or any other features or as may be required as per approvals and permissions granted by the concerned authorities from time to time. The Promoter reserves the right to relocate the reservations elsewhere within the layout. The Agreement for Sale executed between the Promoter and the Allottee would be binding and final. Joint development with Reddy Builders and Developers ("Oregon Hills LLP" is a partner in Reddy Builders and Developers)

MahaRERA Registration No: P51800006729 Available on: <https://maharera.mahaonline.gov.in>



KEY PLAN  
NOT TO SCALE



PLAN NOT TO SCALE

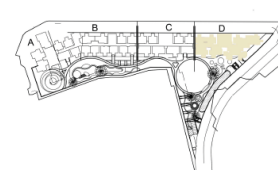
## TOWER D



### TYPICAL FLOOR PLAN

Information, Images, Furniture, Visuals and Aesthetics shown herein are only Architect's Impression and does not form part of the final offer. The areas and dimensions shown herein are subject to a tolerance variation of +/- 3%. Promoter reserves its right to upgrade, modify, relocate, enhance, make changes, delete or alter the common amenities and/or any other features or as may be required as per approvals and permissions granted by the concerned authorities from time to time. The Promoter reserves the right to relocate the reservations elsewhere within the layout. The Agreement for Sale executed between the Promoter and the Allottee would be binding and final. Joint development with Reddy Builders and Developers ("Oregon Hills LLP" is a partner in Reddy Builders and Developers)

MahaRERA Registration No: P51800006729 Available on: <https://maharera.mahaonline.gov.in>



PLAN NOT TO SCALE

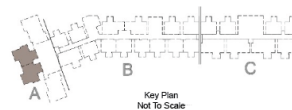
**WING A**



**2 BHK CARPET AREA - 617.00 SQ FT**

Information, Images, Furniture, Visuals and Aesthetics shown herein are only Architect's Impression and does not form part of the final offer. The areas and dimensions shown herein are subject to a tolerance variation of +/- 3%. Promoter reserves its right to upgrade, modify, relocate, enhance, make changes, delete or alter the common amenities and/or any other features or as may be required as per approvals and permissions granted by the concerned authorities from time to time. The Promoter reserves the right to relocate the reservations elsewhere within the layout. The Agreement for Sale executed between the Promoter and the Allottee would be binding and final. Joint development with Reddy Builders and Developers ("Oregon Hills LLP" is a partner in Reddy Builders and Developers)

MahaRERA Registration No: P5180006729 Available on: <https://maharera.mahaonline.gov.in>



PLAN NOT TO SCALE

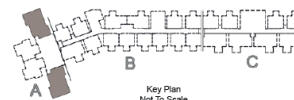
**WING A**



**3 BHK CARPET AREA - 820.00 SQ FT**

Information, Images, Furniture, Visuals and Aesthetics shown herein are only Architect's Impression and does not form part of the final offer. The areas and dimensions shown herein are subject to a tolerance variation of +/- 3%. Promoter reserves its right to upgrade, modify, relocate, enhance, make changes, delete or alter the common amenities and/or any other features or as may be required as per approvals and permissions granted by the concerned authorities from time to time. The Promoter reserves the right to relocate the reservations elsewhere within the layout. The Agreement for Sale executed between the Promoter and the Allottee would be binding and final. Joint development with Reddy Builders and Developers ("Oregon Hills LLP" is a partner in Reddy Builders and Developers)

MahaRERA Registration No: P51800006729 Available on: <https://maharera.mahaonline.gov.in>



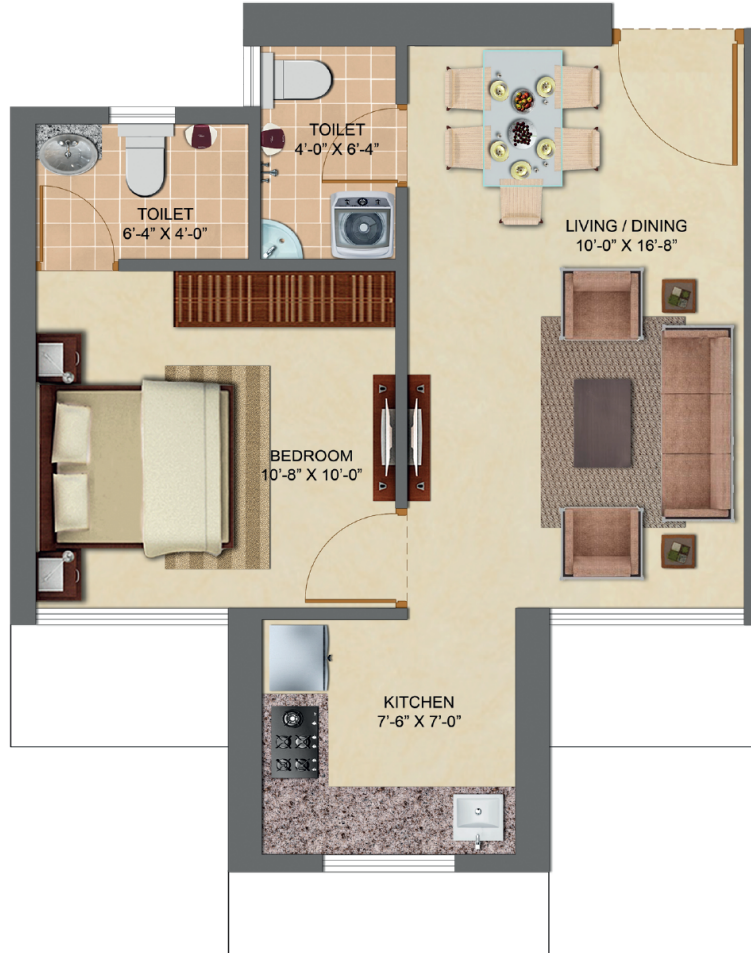
Key Plan  
Not To Scale



PLAN NOT TO SCALE



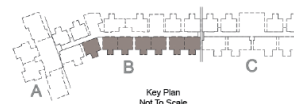
## WING B



### 1 BHK CARPET AREA - 391.00 SQ FT

Information, Images, Furniture, Visuals and Aesthetics shown herein are only Architect's Impression and does not form part of the final offer. The areas and dimensions shown herein are subject to a tolerance variation of +/- 3%. Promoter reserves its right to upgrade, modify, relocate, enhance, make changes, delete or alter the common amenities and/or any other features or as may be required as per approvals and permissions granted by the concerned authorities from time to time. The Promoter reserves the right to relocate the reservations elsewhere within the layout. The Agreement for Sale executed between the Promoter and the Allottee would be binding and final. Joint development with Reddy Builders and Developers ("Oregon Hills LLP" is a partner in Reddy Builders and Developers)

MahaRERA Registration No: P5180006729 Available on: <https://maharera.mahaonline.gov.in>



Key Plan  
Not To Scale



PLAN NOT TO SCALE



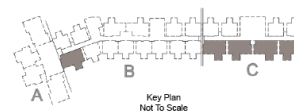
**WING B & C**



**2 BHK LUXE CARPET AREA - 600.00 SQ FT**

Information, Images, Furniture, Visuals and Aesthetics shown herein are only Architect's Impression and does not form part of the final offer. The areas and dimensions shown herein are subject to a tolerance variation of +/- 3%. Promoter reserves its right to upgrade, modify, relocate, enhance, make changes, delete or alter the common amenities and/or any other features or as may be required as per approvals and permissions granted by the concerned authorities from time to time. The Promoter reserves the right to relocate the reservations elsewhere within the layout. The Agreement for Sale executed between the Promoter and the Allottee would be binding and final. Joint development with Reddy Builders and Developers ("Oregon Hills LLP" is a partner in Reddy Builders and Developers)

MahaRERA Registration No: P51800006729 Available on: <https://maharera.mahaonline.gov.in>

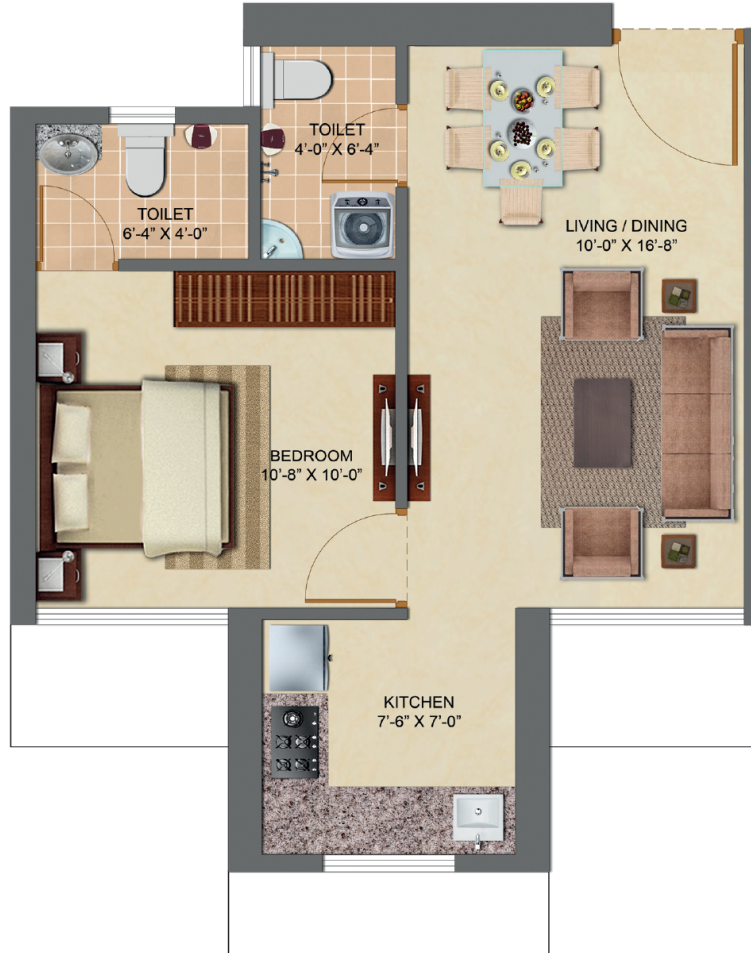


Key Plan  
Not To Scale



PLAN NOT TO SCALE

## WING B



### 1 BHK CARPET AREA - 391.00 SQ FT

Information, Images, Furniture, Visuals and Aesthetics shown herein are only Architect's Impression and does not form part of the final offer. The areas and dimensions shown herein are subject to a tolerance variation of +/- 3%. Promoter reserves its right to upgrade, modify, relocate, enhance, make changes, delete or alter the common amenities and/or any other features or as may be required as per approvals and permissions granted by the concerned authorities from time to time. The Promoter reserves the right to relocate the reservations elsewhere within the layout. The Agreement for Sale executed between the Promoter and the Allottee would be binding and final. Joint development with Reddy Builders and Developers ("Oregon Hills LLP" is a partner in Reddy Builders and Developers)

MahaRERA Registration No: P5180006729 Available on: <https://maharera.mahaonline.gov.in>



Key Plan  
Not To Scale



PLAN NOT TO SCALE



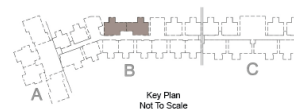
## WING B



### 2 BHK CARPET AREA - 493.00 SQ FT

Information, Images, Furniture, Visuals and Aesthetics shown herein are only Architect's Impression and does not form part of the final offer. The areas and dimensions shown herein are subject to a tolerance variation of +/- 3%. Promoter reserves its right to upgrade, modify, relocate, enhance, make changes, delete or alter the common amenities and/or any other features or as may be required as per approvals and permissions granted by the concerned authorities from time to time. The Promoter reserves the right to relocate the reservations elsewhere within the layout. The Agreement for Sale executed between the Promoter and the Allottee would be binding and final. Joint development with Reddy Builders and Developers ("Oregon Hills LLP" is a partner in Reddy Builders and Developers)

MahaRERA Registration No: P51800006729 Available on: <https://maharera.mahaonline.gov.in>



Key Plan  
Not To Scale



PLAN NOT TO SCALE



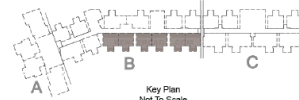
**WING B**



**JODI FLAT CARPET AREA - 788.00 SQ FT**

Information, Images, Furniture, Visuals and Aesthetics shown herein are only Architect's Impression and does not form part of the final offer. The areas and dimensions shown herein are subject to a tolerance variation of +/- 3%. Promoter reserves its right to upgrade, modify, relocate, enhance, make changes, delete or alter the common amenities and/or any other features or as may be required as per approvals and permissions granted by the concerned authorities from time to time. The Promoter reserves the right to relocate the reservations elsewhere within the layout. The Agreement for Sale executed between the Promoter and the Allottee would be binding and final. Joint development with Reddy Builders and Developers ("Oregon Hills LLP" is a partner in Reddy Builders and Developers)

MahaRERA Registration No: P5180006729 Available on: <https://maharera.mahaonline.gov.in>



PLAN NOT TO SCALE



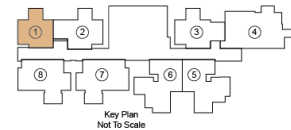
## TOWER D



### 1 BHK CARPET AREA - 391.00 SQ.FT.

Information, Images, Furniture, Visuals and Aesthetics shown herein are only Architect's Impression and does not form part of the final offer. The areas and dimensions shown herein are subject to a tolerance variation of +/- 3%. Promoter reserves its right to upgrade, modify, relocate, enhance, make changes, delete or alter the common amenities and/or any other features or as may be required as per approvals and permissions granted by the concerned authorities from time to time. The Promoter reserves the right to relocate the reservations elsewhere within the layout. The Agreement for Sale executed between the Promoter and the Allottee would be binding and final. Joint development with Reddy Builders and Developers ("Oregon Hills LLP" is a partner in Reddy Builders and Developers)

MahaRERA Registration No: P51800006729 Available on: <https://maharera.mahaonline.gov.in>



PLAN NOT TO SCALE



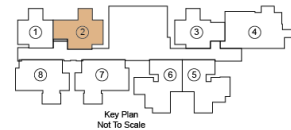
## TOWER D



## 2 BHK CARPET AREA - 494.00 SQ.FT.

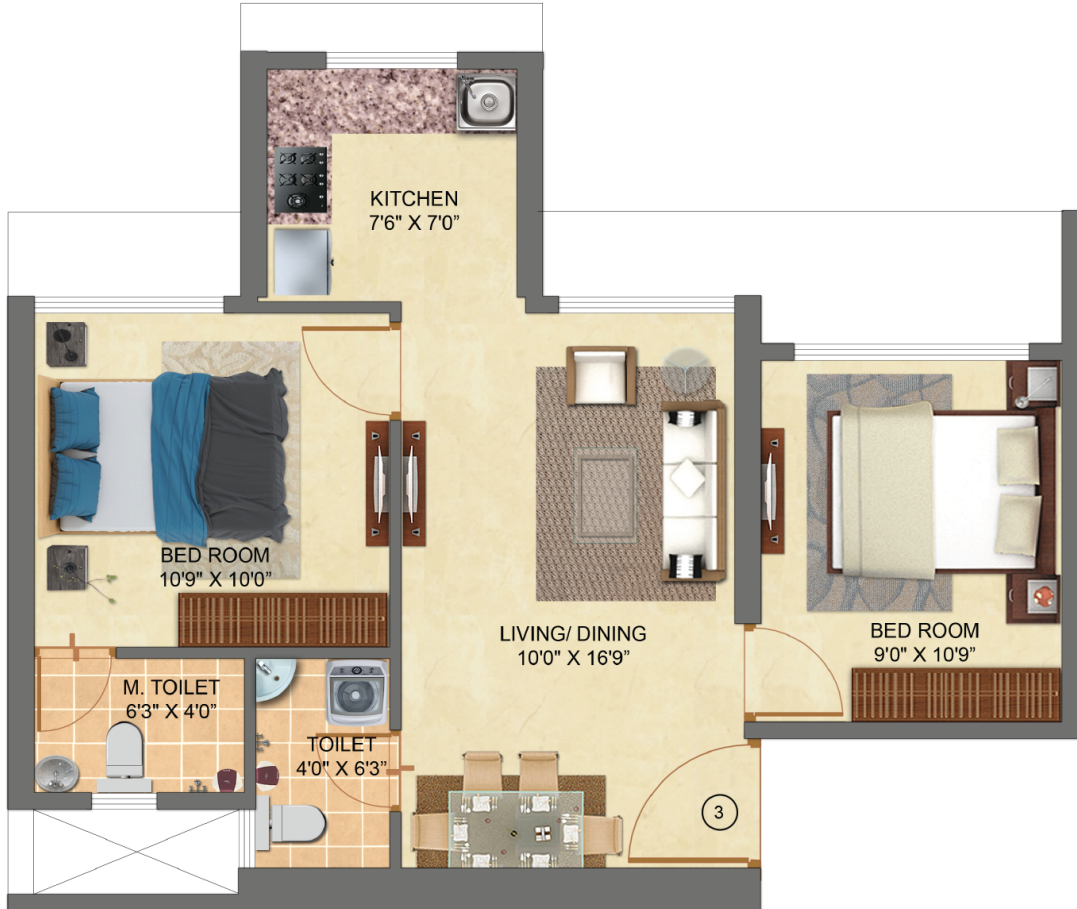
Information, Images, Furniture, Visuals and Aesthetics shown herein are only Architect's Impression and does not form part of the final offer. The areas and dimensions shown herein are subject to a tolerance variation of +/- 3%. Promoter reserves its right to upgrade, modify, relocate, enhance, make changes, delete or alter the common amenities and/or any other features or as may be required as per approvals and permissions granted by the concerned authorities from time to time. The Promoter reserves the right to relocate the reservations elsewhere within the layout. The Agreement for Sale executed between the Promoter and the Allottee would be binding and final. Joint development with Reddy Builders and Developers ("Oregon Hills LLP" is a partner in Reddy Builders and Developers)

MahaRERA Registration No: P51800006729 Available on: <https://maharera.mahaonline.gov.in>



PLAN NOT TO SCALE

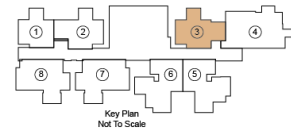
## TOWER D



## 2 BHK CARPET AREA - 498.00 SQ.FT.

Information, Images, Furniture, Visuals and Aesthetics shown herein are only Architect's Impression and does not form part of the final offer. The areas and dimensions shown herein are subject to a tolerance variation of +/- 3%. Promoter reserves its right to upgrade, modify, relocate, enhance, make changes, delete or alter the common amenities and/or any other features or as may be required as per approvals and permissions granted by the concerned authorities from time to time. The Promoter reserves the right to relocate the reservations elsewhere within the layout. The Agreement for Sale executed between the Promoter and the Allottee would be binding and final. Joint development with Reddy Builders and Developers ("Oregon Hills LLP" is a partner in Reddy Builders and Developers)

MahaRERA Registration No: P5180006729 Available on: <https://maharera.mahaonline.gov.in>



PLAN NOT TO SCALE



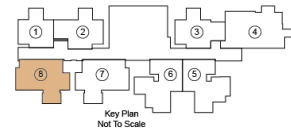
## TOWER D



## 2 BHK CARPET AREA - 604.00 SQ.FT.

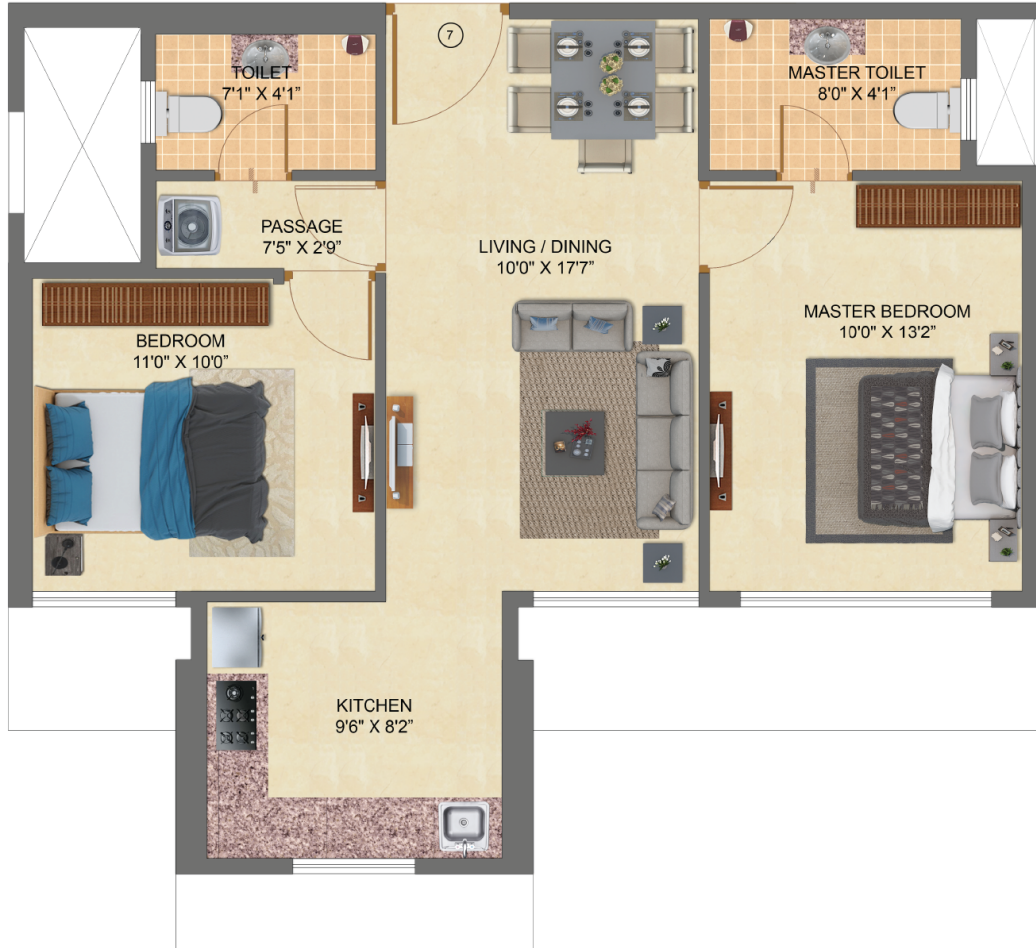
Information, Images, Furniture, Visuals and Aesthetics shown herein are only Architect's Impression and does not form part of the final offer. The areas and dimensions shown herein are subject to a tolerance variation of +/- 3%. Promoter reserves its right to upgrade, modify, relocate, enhance, make changes, delete or alter the common amenities and/or any other features or as may be required as per approvals and permissions granted by the concerned authorities from time to time. The Promoter reserves the right to relocate the reservations elsewhere within the layout. The Agreement for Sale executed between the Promoter and the Allottee would be binding and final. Joint development with Reddy Builders and Developers ("Oregon Hills LLP" is a partner in Reddy Builders and Developers)

MahaRERA Registration No: P51800006729 Available on: <https://maharera.mahaonline.gov.in>



PLAN NOT TO SCALE

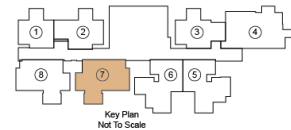
## TOWER D



### 2 BHK CARPET AREA - 605.00 SQ.FT.

Information, Images, Furniture, Visuals and Aesthetics shown herein are only Architect's Impression and does not form part of the final offer. The areas and dimensions shown herein are subject to a tolerance variation of +/- 3%. Promoter reserves its right to upgrade, modify, relocate, enhance, make changes, delete or alter the common amenities and/or any other features or as may be required as per approvals and permissions granted by the concerned authorities from time to time. The Promoter reserves the right to relocate the reservations elsewhere within the layout. The Agreement for Sale executed between the Promoter and the Allottee would be binding and final. Joint development with Reddy Builders and Developers ("Oregon Hills LLP" is a partner in Reddy Builders and Developers)

MahaRERA Registration No: P51800006729 Available on: <https://maharera.mahaonline.gov.in>



PLAN NOT TO SCALE



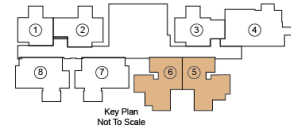
## TOWER D



### 2 BHK CARPET AREA - 612.00 SQ.FT.

Information, Images, Furniture, Visuals and Aesthetics shown herein are only Architect's Impression and does not form part of the final offer. The areas and dimensions shown herein are subject to a tolerance variation of +/- 3%. Promoter reserves its right to upgrade, modify, relocate, enhance, make changes, delete or alter the common amenities and/or any other features or as may be required as per approvals and permissions granted by the concerned authorities from time to time. The Promoter reserves the right to relocate the reservations elsewhere within the layout. The Agreement for Sale executed between the Promoter and the Allottee would be binding and final. Joint development with Reddy Builders and Developers ("Oregon Hills LLP" is a partner in Reddy Builders and Developers)

MahaRERA Registration No: P5180006729 Available on: <https://maharera.mahaonline.gov.in>



PLAN NOT TO SCALE

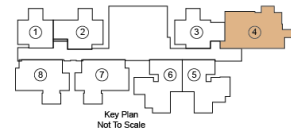
## TOWER D



### 3 BHK CARPET AREA - 846.00 SQ.FT.

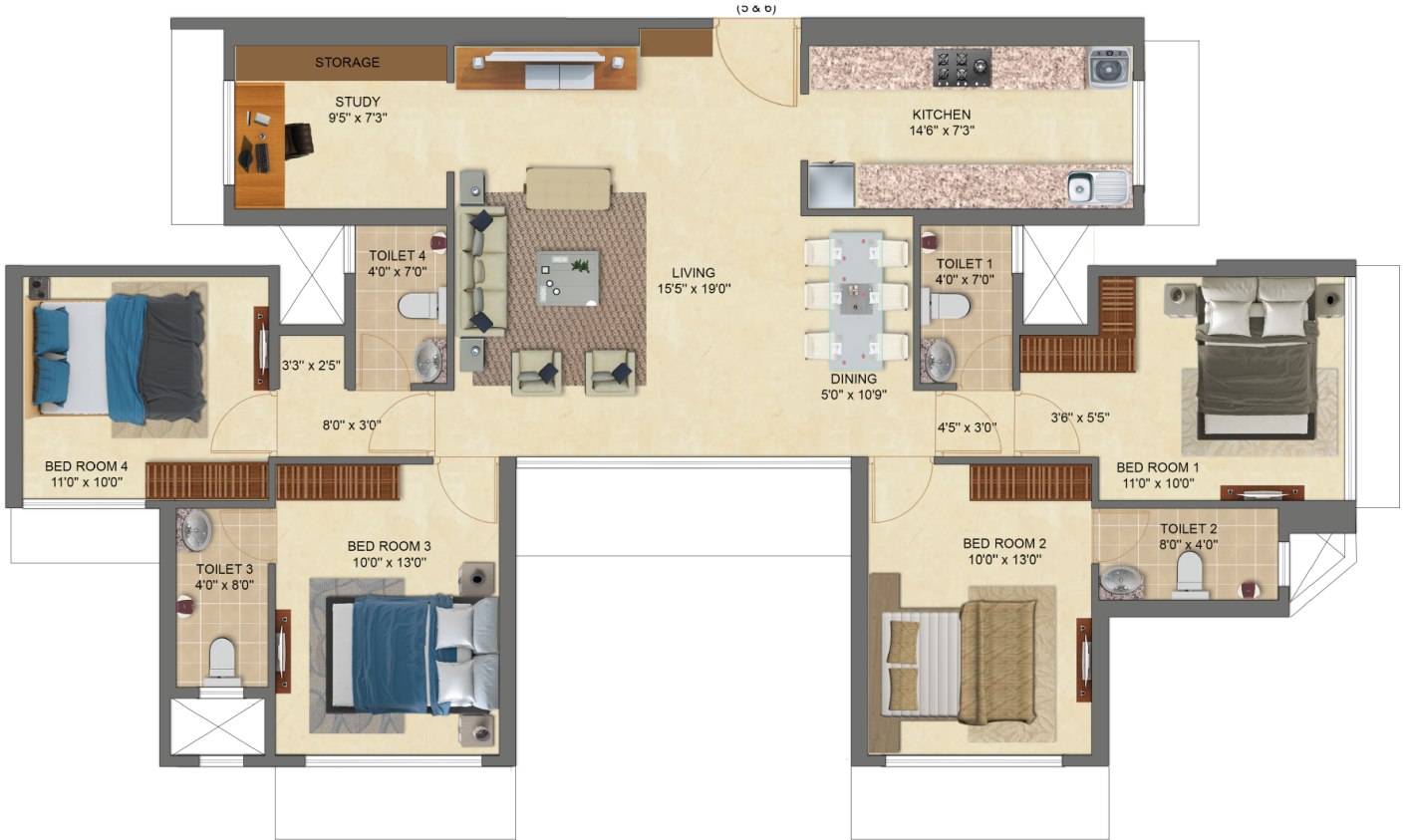
Information, Images, Furniture, Visuals and Aesthetics shown herein are only Architect's Impression and does not form part of the final offer. The areas and dimensions shown herein are subject to a tolerance variation of +/- 3%. Promoter reserves its right to upgrade, modify, relocate, enhance, make changes, delete or alter the common amenities and/or any other features or as may be required as per approvals and permissions granted by the concerned authorities from time to time. The Promoter reserves the right to relocate the reservations elsewhere within the layout. The Agreement for Sale executed between the Promoter and the Allottee would be binding and final. Joint development with Reddy Builders and Developers ("Oregon Hills LLP" is a partner in Reddy Builders and Developers)

MahaRERA Registration No: P51800006729 Available on: <https://maharera.mahaonline.gov.in>



PLAN NOT TO SCALE

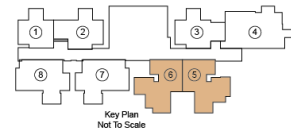
**TOWER D**



**JODI FLAT CARPET AREA - 1233.00 SQ.FT.**

Information, Images, Furniture, Visuals and Aesthetics shown herein are only Architect's Impression and does not form part of the final offer. The areas and dimensions shown herein are subject to a tolerance variation of +/- 3%. Promoter reserves its right to upgrade, modify, relocate, enhance, make changes, delete or alter the common amenities and/or any other features or as may be required as per approvals and permissions granted by the concerned authorities from time to time. The Promoter reserves the right to relocate the reservations elsewhere within the layout. The Agreement for Sale executed between the Promoter and the Allottee would be binding and final. Joint development with Reddy Builders and Developers ("Oregon Hills LLP" is a partner in Reddy Builders and Developers)

MahaRERA Registration No: P51800006729 Available on: <https://maharera.mahaonline.gov.in>



PLAN NOT TO SCALE